



COMMERCIAL SOLID WASTE GUIDE

NO HAZARDOUS OR CONSTRUCTION AND DEMOLITION WASTE

ACCEPTED MATERIALS



FOAM



PACKAGING



PLASTIC BAGS



GLOVES



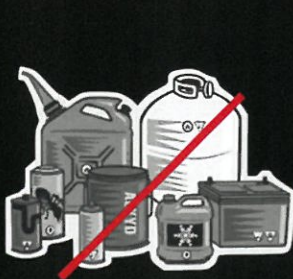
BROKEN
GLASS/
CERAMIC



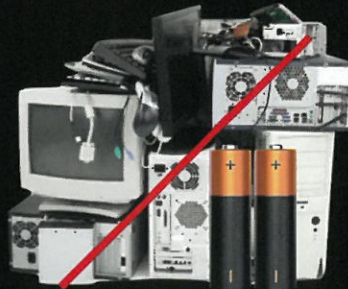
HOSES,
CORDS
AND WIRES



NOT ACCEPTED



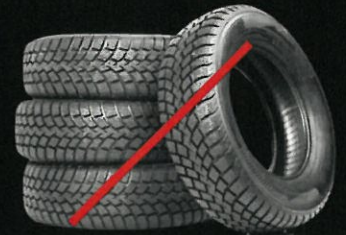
NO
HAZARDOUS
MATERIAL



**NO BATTERIES/
E-WASTE**



NO LIGHTBULBS



NO TIRES

WWW.WAREDISPOSAL.COM
714-664-0677

WARE
DISPOSAL, INC.



COMMERCIAL RECYCLING GUIDE

NO FOOD OR LIQUID RESIDUE

ACCEPTED MATERIALS



PLASTIC #1,2,5

BOTTLES, CONTAINERS, JUGS,
AND JARS



PAPER

PAPER, CARDBOARD,
NEWSPAPER AND MAIL



METAL

ALUMINUM CANS, BOTTLES,
STEEL, AND TIN CANS



GLASS

FOOD AND BEVERAGE
BOTTLES AND JARS



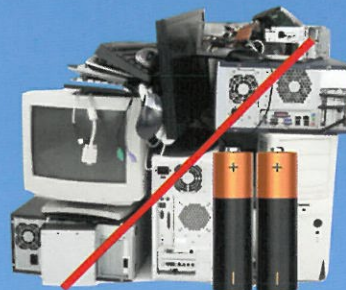
NOT RECYCLABLE



**NO PLASTIC
BAGS, FILM OR
WRAP**



NO WOOD PALLETS



**NO BATTERIES/
E-WASTE**



NO TIRES

WWW.WAREDISPOSAL.COM
714-664-0677

WARE
DISPOSAL, INC.



COMMERCIAL RECYCLING GUIDE

NO FOOD OR LIQUID RESIDUE

ACCEPTED MATERIALS



PLASTIC #1,2,5

BOTTLES, CONTAINERS, JUGS,
AND JARS



PAPER

PAPER, CARDBOARD,
NEWSPAPER AND MAIL



METAL

ALUMINUM CANS, BOTTLES,
STEEL, AND TIN CANS



GLASS

FOOD AND BEVERAGE
BOTTLES AND JARS



NOT RECYCLABLE



**NO PLASTIC
BAGS, FILM OR
WRAP**



NO WOOD PALLETS



**NO BATTERIES/
E-WASTE**



NO TIRES

WWW.WAREDISPOSAL.COM
714-664-0677

WARE
DISPOSAL, INC.

WHAT GOES IN THE RECYCLING CONTAINER?

ACCEPTABLE MATERIALS

PLASTICS

- Plastics # 1,2, 5
- Soda, juice and water bottles
- Beverage & detergent jugs

GLASS

- Amber, green & mixed-color glass
- Clear food glass jars
- Soda & liquor bottles

METALS

- Aluminum cans and foil
- Scrap metal
- Steel and tin cans

CARBOARD

- Cardboard and corrugated boxes
- Pizza boxes (clean sections only)

PAPER

- Newspaper
- Paper (white and mixed color)
- Cereal boxes
- Junk mail & magazines



NOT ACCEPTED

NO LIQUIDS OR FOOD RESIDUE

NO PLASTIC BAGS

- No plastic Bags
- No window glass
- No waxed paper cups
- No waxed carboard
- No Foam
- No Hazardous Waste
- No wood
- No Tires
- No batteries or Electronics

HOW TO PARTICIPATE?

In order to maximize you recycle service, follow these simple steps:

- Place all recyclables loose (without a bag) in your recycling container.
- All recyclables must be emptied of food and/or liquid before placing in the recycling container.
- Flatten cardboard boxes to save space.
- Recycle the times above only, keep all non accepted items out of the recycling container.

Placing only clean acceptable materials in your recycling container, will ensure that those materials are recycled properly!

MANDATORY ORGANICS AND FOOD WASTE RECYCLING

California Assembly Bill (AB 1826) requires all businesses, including multi-family dwellings, to recycle their organics waste.

California Senate Bill (SB1383) requires businesses and residents to divert organic materials (including: food waste, yard waste and soiled paper products) from the landfill. Starting January 1, 2022 regulations will take effect.

Each city is required to implement this program. Therefore Ware Disposal will assist your business to be in compliance.

WHY?

Californians dispose approximately 30 million tons of waste in landfills each year, of which more than 30% is organic matter. By diverting organics from the landfill, we are helping to reduce greenhouse gas emissions.

WHAT IS ORGANIC WASTE?

Organic waste includes food scraps, yard trimmings and 100% fiber based food soiled paper.



CONTACT INFORMATION

Ware Disposal Inc.
P.O. Box 1318
Santa Ana, CA 92702

Customer Service
714-664-0677

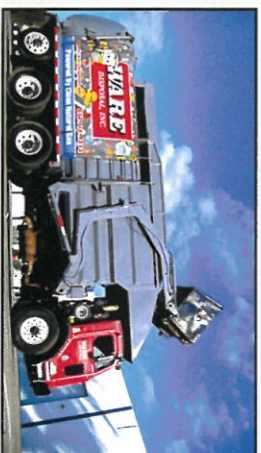
Phone Hours
Monday - Friday, 8:00 am - 5:00 pm
Saturday, 8:00 am - 12:00 pm

Website
www.waredisposal.com

For any questions: info@waredisposal.com

ABOUT US

Ware Disposal Inc. has been providing waste, recycling and organic collection in Southern California since 1968. Ware Disposal Inc. is family owned and operated. We use natural gas powered trucks to help our cities and counties we service go green. We follow our commitment to serve you while decreasing our carbon footprint!



ORGANICS & FOOD WASTE RECYCLING COLLECTION PROGRAMS

COMMERCIAL ACCOUNTS



WHAT GOES IN THE GREEN CONTAINER?

ACCEPTABLE MATERIALS

GREEN WASTE

- Grass Clippings
 - Leaves and branches
 - Flower and hedge trimmings
 - Weeds
 - Lumber, scrap wood and plywood types (not painted or
- ### FOOD SCRAPS
- Fruits and vegetables
 - Cheese and dairy
 - Meat, bones, poultry, and seafood
 - Bread, rice, and pasta
 - Cut flowers, and herbs
 - Coffee grounds, egg shells, and nuts.



No plastic bags!

NOT ACCEPTED

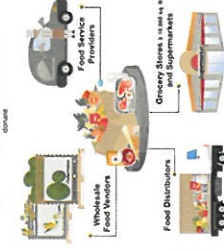
- Twist ties
- Aluminum foil
- Foil-lined cartons, containers and packaging
- Cooking oils, fats or grease
- Plastics
- Styrofoam
- K-cups
- Diapers or wipes
- Cactus plants
- Dirt & rocks
- Concrete
- Glass
- Metals
- Liquids

HOW TO PARTICIPATE?

- 1) **Subscribe to collection services:** Businesses can subscribe to an organics and recycling service from Ware Disposal. These businesses include: commercial businesses, public/private schools, and multi-family properties with 5 units or more.
- 2) **Sort your materials:** Businesses will now sort their materials onsite. Your business will need to have a trash, recycling, and organics container.
- 3) **Participate in a Surplus Edible Food Recovery Program:** Large food-generating businesses (such as supermarkets and wholesale food distributors) are required to contract with an edible food recovery agency and track your recovered food.

Tier 1 January 1, 2022

To be eligible for this program, businesses must produce fresh produce and food waste from a source



Tier 2 January 1, 2024

This tier includes businesses that have more prepared food items and are required to meet food safety requirements (e.g. time and temperature controls)

